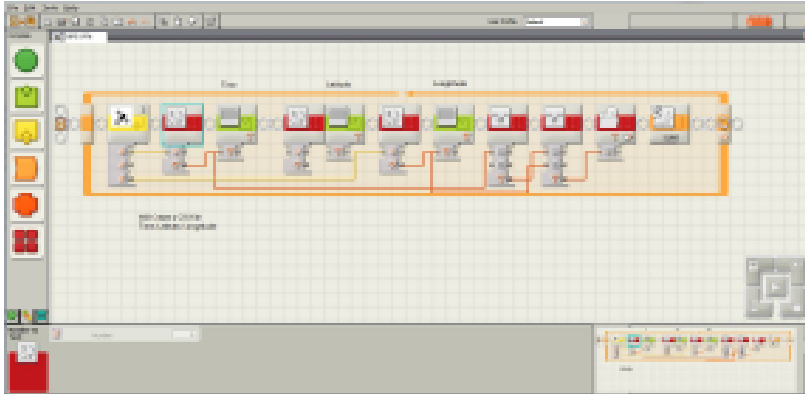


How to Collect and Upload data to Google Maps

1. First, ensure that you have installed both the GPSRead and GPSNavigation customs blocks.
2. Open the GPS-2-File.rbt file

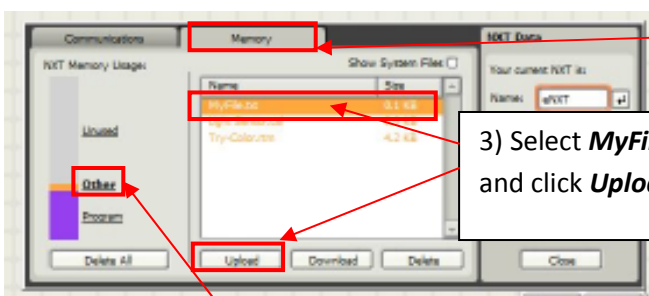


3. Update the Sensor Port that the dGPS module is connected to.
4. Download the program to your NXT.
5. Ensure that the **Blue LED** on your dGPS module is locked before starting the program on your NXT.
6. Go for a walk or drive to collect data from your GPS. It will collect your current coordinates at every 5 seconds interval. When you are done collecting, stop the program.
7. Retrieve the data from the NXT to your PC.



Click on **NXT Windows** Button.

8. Click on NXT Windows button.



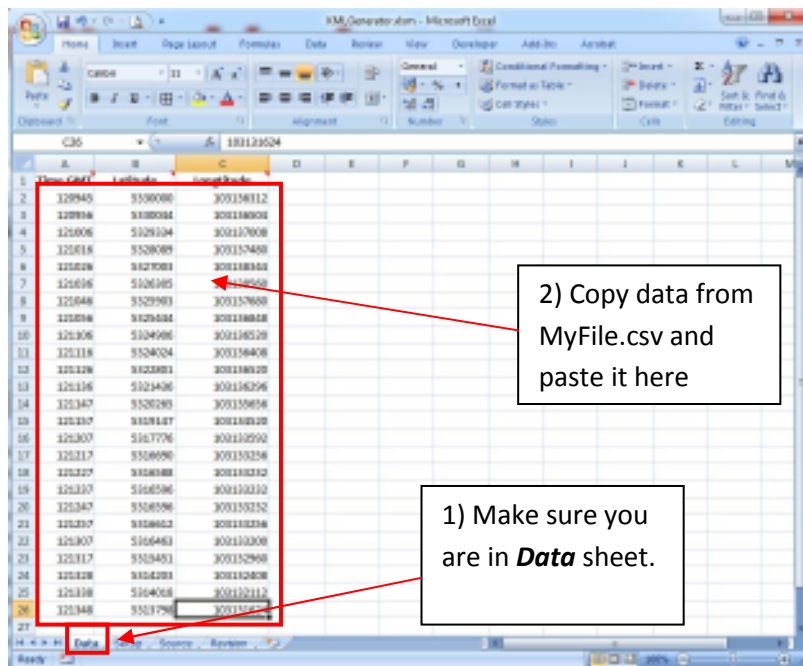
1) Select the **Memory** tab.

3) Select **MyFile.txt** and click **Upload**.

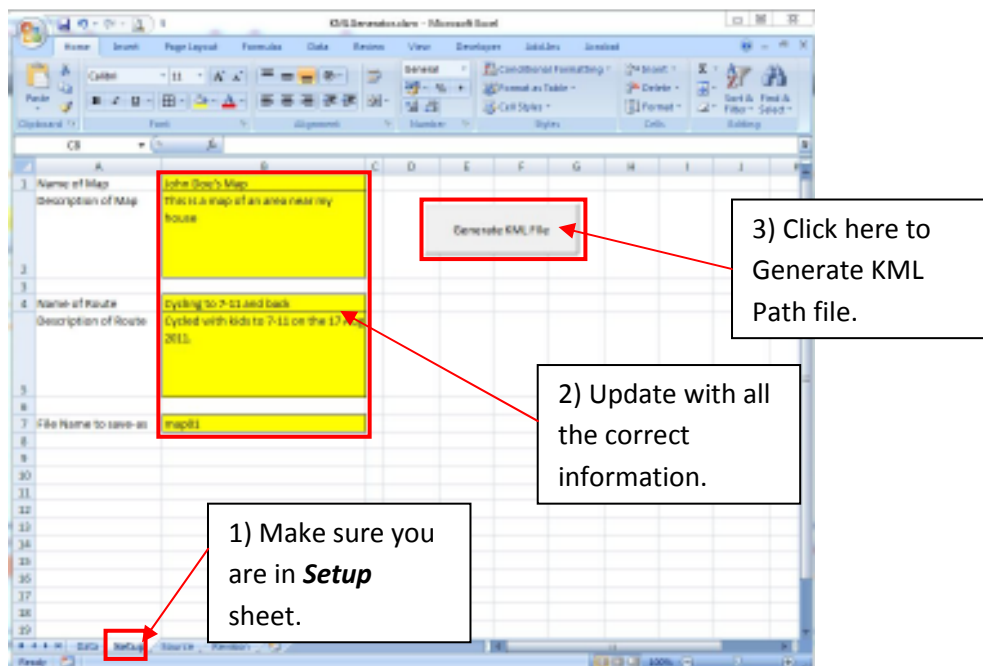
2) Select the **Other** option.

9. Rename the file from MyFile.txt to MyFile.csv.
10. Open MyFile.csv with Microsoft Excel

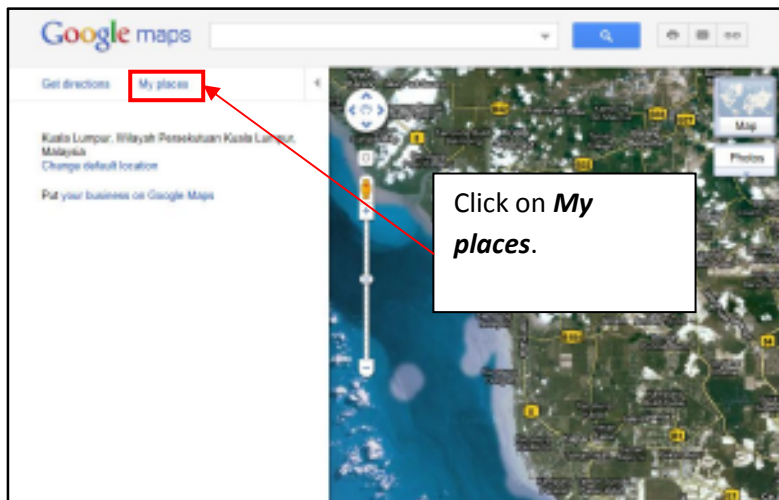
11. Open KMLGenerator.xlsm (Excel with embedded Macro)
12. Click "Enabled Macros". Macros are used to generate and create the KML file.



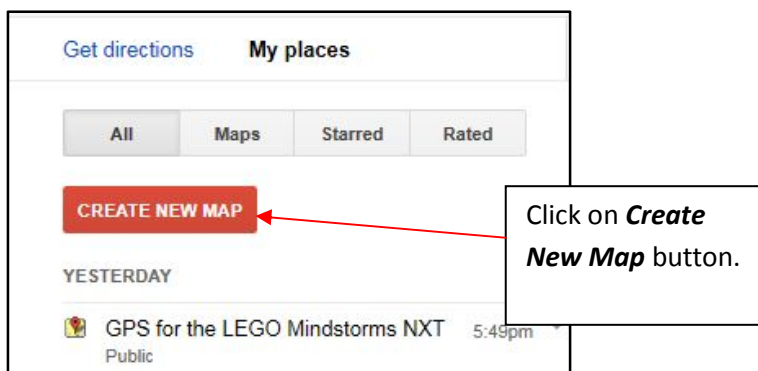
13. Copy all the collected data from MyFile.csv and paste it into the data tab in KMLGenerator.xlsm file.



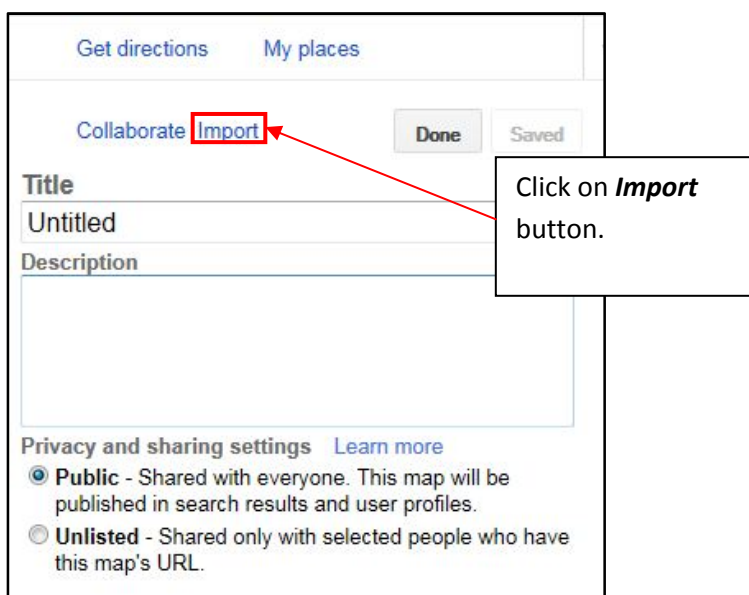
14. Locate your generated KML file. It should be in the same folder as KMLGenerator.xlsm.
15. There you have it, a KML Path file.
16. Next you'll need to upload this KML file to Google Maps.
17. Go to Google Maps (maps.google.com)
18. Login to your account (or create an account you have don't have one yet)



19. Click on **My places**.



20. Next click on **Create New Map**.



21. Click on **Import** button.
22. Select the created KML Path file and click upload.
23. You should be able to see your path being rendered it Google Maps.
24. Click **Done** and you have successfully uploaded your Path into Google Maps.